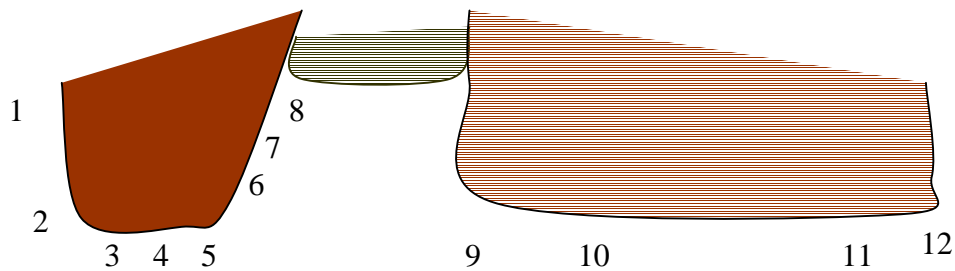


## Deer Gallows – Right Hand Boulders

← To Main Buttress



1	Project	?	A mantel to a blind crack
2	Setting Sun	(VS) 5b	Left arete on its LHS via big flake to a rounded finish.
3		(VS) 5c	Left Arete on its RHS to big pocket.
4	Project	?	Wall between arêtes on pebbles and pockets
5	Friendly Spirits	(VS) 5b	R arete on LHS starting at lowest point – good.
6		4c	R Arete on its RHS to flutes.
7		VO 5a	Centre of Triangular slab to flutes.
8		4b	Easy Scoop.
9	Empty Skies	V2 5c	L arete of RH block on RHS via pocket, rounded exit
10	Moorland Serenade	V2 5c	Wall R of L arete from lowest point 1m R of arete, trending Right.
11		V1 5b	Wall 1m L of R arete without using arete.
12		4b	Easy R arete on its LHS.

All problems recorded by Malcolm Townsley 2003/4 though many may have been climbed earlier.